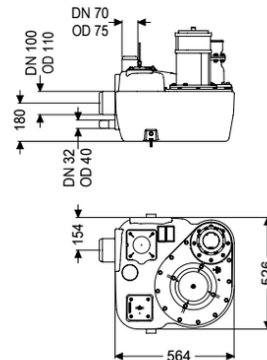
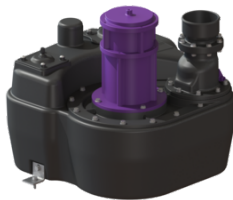


Lifting station Aqualift F Mono, Comfort, SPF 1400-S3



Article information

Item no.: 28646-C
GTIN: 4026092058473
Price group: 20

Advantages

- Different performance classes available
- Pressure sensor for reliable pneumatic level measurement
- Including sound absorption mat

Description

The lifting station for faecal and faecal-free wastewater is equipped with a submersible pump and a backflow preventer. The collection tank made of permanently resistant polymer (PE) offers universal connection options and has a screwed access cover.

Variant

Type of system:

Shut-off valve:

Retaining bracket for the lift protection:

Tested sound insulation as per test report:

Resistant:

Single unit

without shut-off valve

yes

yes

Resistant to saline media, wastewater from water softening systems and wastewater containing condensate from heating systems

Control unit

integrated

vertical

Rim width:

Backwater protection:

Pressure pipe connection:

General characteristics

Colour:

Standard:

Type of wastewater:

Installation situation:

Delivery state:

black

EN 12050-1

with sewage

free-standing installation

Installation-ready (electrical components, connection parts must be connected on site)

System type:	Mono
Dimensions	
Net weight:	46,75 kg
Gross weight:	48,4 kg
Length:	564 mm
Width:	525 mm
Height:	539 mm
Packaging dimension:	length
Packaging dimension:	width
Packaging dimension:	height
Tank/drain body	
Pressure pipe connection (DN):	100
Pressure pipe connection (OD):	110 mm
Connection for manual diaphragm pump (DN):	32
Venting connection (DN):	70
Distance pipe bottom inlet to tank bottom:	125 mm
Distance from centre of inlet pipe to tank bottom:	180 mm
Number of inlets:	150 mm
Inlet nominal size (DN):	110 mm
Inlet nominal size (DN):	100 mm
Inlet type:	1
Pumping volume:	20 l
Tank volume:	50 l
Pumping device	
Pump control:	SPF 1400
Number of pumps:	1
Weight:	25 kg
Connection type:	coded plug
Rated current:	7,3 A
Length of mains cable for pump:	5 m
Self-diagnosis system (SDS):	I
Insulation class:	F
Cos phi - power factor:	0,98
Protection class control unit:	IP 68 (3m/48h)
DSC:	integrated
Max. temperature (permanent) of conveyed material:	40 °C
Max. pumping capacity:	38 m³/h
Max. pumping height:	7 m
Speed:	1370 U/min
Power P1:	1,6 kW
Power P2:	1,1 kW
Operating mode:	S3 - 50 %
Type of pump connection cable:	H07RN-F 3G 1.5 mm²
Impeller type:	Multi-vane impeller
Free passage:	40 mm

Control

Control unit:	Comfort
Alarm sensor:	Immersion pipe
Level measurement instrument:	Immersion pipe
Type of level measurement:	pneumatic
Protection class probe:	IP 54
Operating voltage:	230 V
Connection type:	coded plug
Length of mains cable for control unit:	1,4 m
Potential-free contact:	optional
GSM interface:	yes
USB interface:	yes
Log book function:	yes
Multi-line display:	yes
Battery buffering:	yes
Self-diagnosis system (SDS):	yes
Rated current:	7,3 A